

Miniature U
The Art of Small

Windmill and Lavender

Instruction manual

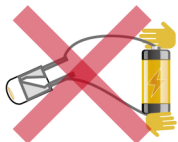


Windmill and Lavender

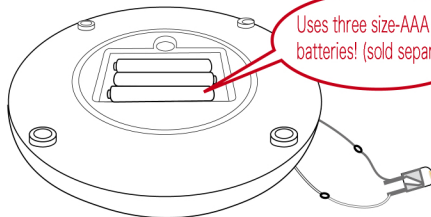
Windmill and Lavender

Before beginning to make...

1. Please prepare your own tools for building (needle, scissors, cutter, tweezers, etc.)
2. Please be sure to use the correct materials when cutting to avoid mistakes.
3. Please be aware that the color of the materials may differ from the photos in this manual.
4. An adult should be present if children are building.
5. Please test the operation of the LED light bulbs (A4) by referring to the image below.



DO NOT connect the cords directly to the batteries.



Lighting tests require connecting to the bottom of the pedestal of the A1 pedestal set. Please prepare batteries and a screw driver. Connect the cords with the same colors.

Warning DO NOT plug any of the cords into power outlets.

Contents of Bag A



A1 Wooden parts
(cream)
3.3x2.7x0.2cm (2)



A2 Wooden parts
(purple)
1.2x1.2x0.3cm (2)



A3 Wooden parts(cream)
4.5x3.4x0.2cm (2)



A4 Wooden parts
(purple)
0.8x0.6x0.3cm (4)



A5 Wooden part
(white)
1.8x1x0.2cm (1)



A6 Wooden part
(purple)
3.1x1.9x0.3cm (1)



A7 Wooden parts
(purple)
3.1x1.9x0.3cm (2)



A8 Wooden part
(cream)
1.8x1.7x0.2cm (1)



A9 Wooden part
(cream)
1.8x1.7x0.2cm (1)



A10 Wooden parts
(cream)
1.2x0.8x0.2cm (2)



A11 Wooden parts
(purple)
1.9x1.8x0.3cm (2)



A12 Wooden part (purple)
4.3x4.3x0.2cm (1)



A13 Wooden parts
(purple)
0.6x0.6x0.3cm (2)



A14 Wooden part
(purple)
diameter0.2x2.2cm (1)



A15 Wooden part(white)
2.5x2.4x0.2cm (1)



A16 Wooden parts
(white)
2.2x1.6x0.2cm (2)



A17 Wooden parts
(purple)
2.6x1.7x0.3cm (2)



A18 Wooden part
(purple)
1.3x0.7x0.2cm (1)



A19 Wooden parts
(purple)
1.3x0.8x0.1cm (2)

Contents of Bag B



B1 Wooden part
(ocher)
3x2.1x0.2cm (1)



B2 Wooden part (red brown)
3.6x3.6x0.2cm (1)



B3 Wooden parts
(red brown)
3.6x0.8x0.2cm (2)



B4 Wooden parts
(red brown)
3.2x0.8x0.2cm (2)



B5 Wooden part
(white)
1.6x1x0.2cm (1)



B6 Wooden part
(white)
1x0.8x0.2cm (1)



B7 Wooden part
(white)
0.5x0.5x0.25cm (1)



B8 Wooden part
(white)
1.15x0.6x0.3cm (1)



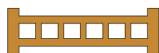
B9 Wooden part
(ocher)
0.6x0.15x0.15cm (1)



B10 Wooden parts
(white)
0.5x0.4x0.1cm (3)



B11 Wooden part
(light yellow)
1.5×0.7×0.3cm (1)



B12 Wooden part
(ocher)
2×0.6×0.2cm (1)



B13 Wooden part
(ocher)
0.8×0.6×0.2cm (1)



B14 Wooden part
(ocher)
2.8×0.8×0.2cm (1)



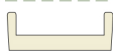
B15 Wooden part
(white)
1.4×0.9×0.5cm (1)



B16 Wooden part
(white)
0.66×0.5×0.1cm (1)



B17 Wooden parts
(white)
0.57×0.15×0.1cm (3)



B18 Wooden part
(plain wood)
1.4×0.5×0.4cm (1)



B19 Wooden part
(plain wood)
1.2×0.7×0.1cm (1)



B20 Wooden part
(plain wood)
0.8×0.4×0.4cm (1)



B21 Wooden part
(plain wood)
0.7×0.6×0.1cm (1)



B22 Wooden parts
(brown)
0.8×0.5×0.2cm (2)



B23 Wooden parts
(white)
0.4×0.3×0.2cm (5)



B24 Wooden part
(light green)
0.9×0.9×0.2cm (1)



B25 Wooden part (cream)
2.8×2.8×0.5cm (1)



B26 Wooden part (red brown)
1.2×1×0.9cm (1)



B27 Wooden part
(cream)
1×0.4×0.5cm (1)



B28 Wooden part (red)
0.9×0.4×0.2cm (1)



B29 Wooden part (red)
0.4×0.4×0.2cm (1)



B30 Wooden part (red)
0.8×0.1×0.1cm (1)



B31 Wooden part (white)
1.5×0.6×0.1cm (1)



B32 Wooden parts
(white)
0.7×0.3×0.1cm (2)



B33 Wooden part
(white)
0.4×0.3×0.1cm (1)



B34 Wooden part
(white)
1×0.15×0.1cm (1)



B35 Wooden part (white)
0.55×0.4×0.1cm (1)



B36 Wooden part (white)
1.9×1.5×0.2cm (1)

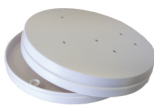


B37 Wooden part
(white)
1×0.3×0.1cm (1)



B38 Wooden parts
(light brown)
1.1×0.75×0.2cm (2枚)

Contents of Bag C



C1 Pedestal set
(1 set)



C2 Transparent dome (1)



C3 LED lights(4)



C4 Screws
(4)



C5 Protection
sticker (1)



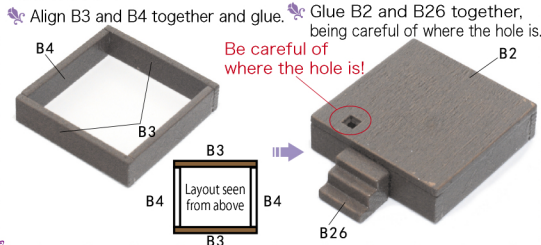
C6
Glue (1)



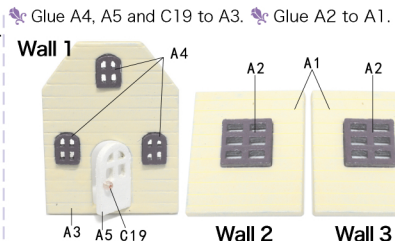
Building process

Windmill cottage

Foundation

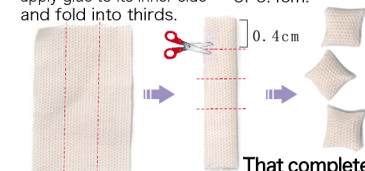


Walls



Cushions

- Cut out a piece of B26, apply glue to its inner side and fold into thirds.
- Cut into three pieces of 0.4cm.



C26: 1.5cmX1.2cm

That completes the cushions(x3).

Large sofa (and small sofa)

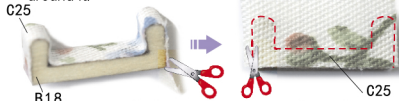
- Cut out C25 with the large sofa 1 pattern paper and glue to B19. Make small cuts in C25.
- Wrap around B19 and glue together.
- Glue on the C25 that was cut with the large sofa 2 pattern paper and cut it to suit the shape. C25



C25

That completes the sofa back.

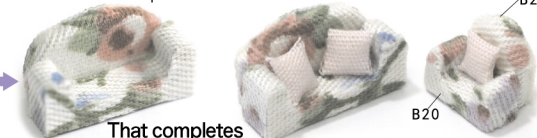
- Cut out C25 with the large sofa 3 pattern paper and glue it on B18 so it wraps around it.
- Cut out C25 with the large sofa 4 pattern paper and glue it on B18. Cut C25 to suit the shape.



B18

That completes the chair part.

- Glue together the sofa back and chair part.
- Make the small sofa in a similar fashion. Glue on each of the cushions. B21



That completes the large sofa.

That completes the small sofa.

Table

- Glue B22 and B23 together. Cut out C27 and glue it on too.
- Glue C13 and C10 onto C17. Glue them onto the table.

C27: 0.7cmX0.5cm

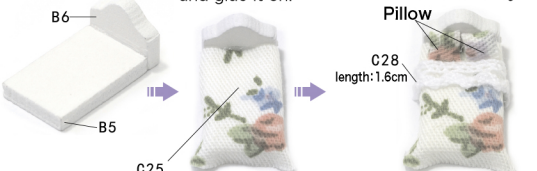


B23

That completes the table.

Bed

- Glue B5 and B6 together.
- Cut out C25 with the pattern paper and glue it on.
- Referring to the cushions made at top-left, use C25 with the pattern paper to make two pillows and glue them in. Also cut out C28 and glue it in.



B6

B5

C25

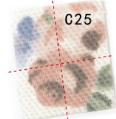
C28
length:1.6cm

Pillow

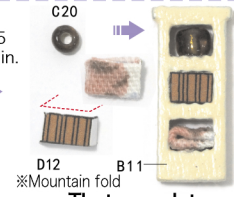
That completes the bed.

First floor shelves

- Fold the cut-out C25 four times and glue in.



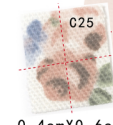
0.4cmX0.6cm



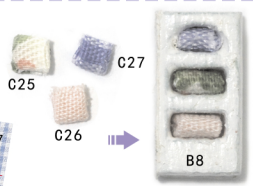
That completes the first floor shelves.

Second floor shelves

- Fold the cut-out C25, C26 and C27 four times each and glue them in.



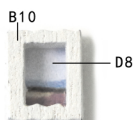
0.4cmX0.6cm



That completes the second floor shelves.

Picture frame

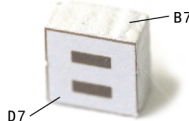
- Glue D8 to B10.



That completes the picture frame.

Chest

- Glue D7 to B7.



That completes the chest.

Chandelier

Pass a C30 through C16.

Cut C30 in four 1.5cm pieces and bend the ends.

Also bend the other end of C30.

Pass through and bend all four in a similar way.

Glue on C19.

C19



That completes the chandelier.

Cabinet

Cut C3 pieces and glue into C20.

C3: 0.3cm

C20

Glue on B15, B16 and B17.

B15

B17

B16

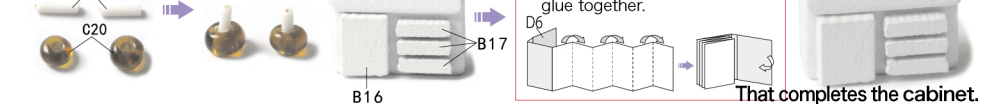
Magazine

Fold D6 in a zig-zag shape and glue together.

D6

Glue on each part.

That completes the cabinet.

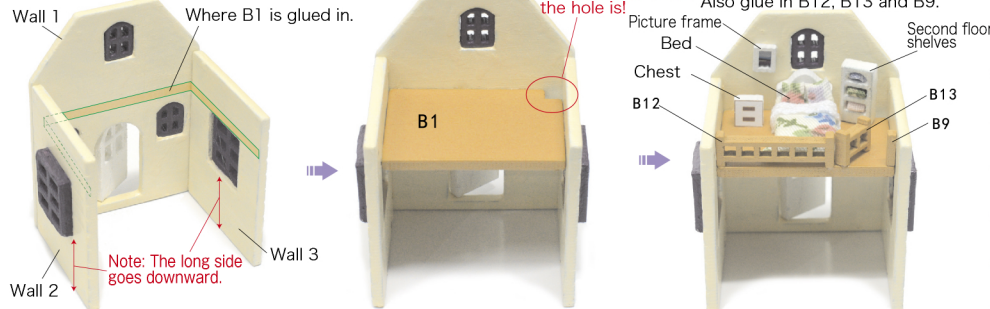


Glue walls 1, 2 and 3 together.

Glue in B1.

Be careful of where the hole is!

Glue the bed, shelves, picture frame and chest into the second floor. Also glue in B12, B13 and B9.



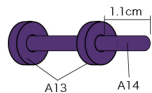
Glue onto the pedestal. Glue the table, sofa, shelves, cabinet and D11 into the first floor.

Glue C3 to the first floor's ceiling. Pass C3 through the hole in the second floor's floor to glue it to the wall of the second floor.

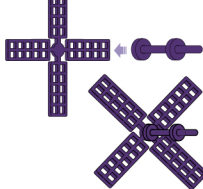
Glue on A6 and A7 to make the roof. Also glue in B14.



Glue one A13 1.1cm down A14 and another on the end.



Glue the A13 on the end to the middle of A12.

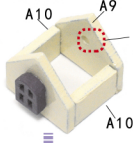


That completes the windmill.

Glue A4 into A8.



Glue A9 and A10 to A8.



Glue on A11.

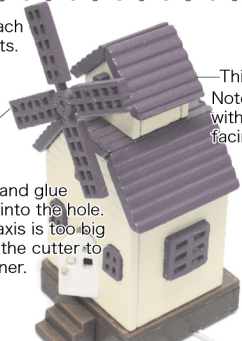


That completes the third floor.

Glue on each of the parts.

Windmill

Note: Insert and glue the windmill into the hole. Note: If the axis is too big to fit in, use the cutter to shave it thinner.



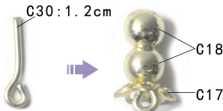
Third floor
Note: Glue it on with the hole facing the front.

That completes the Windmill cottage.

House

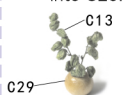
Light

Cut a piece of C30, bend it and insert and glue on C17 and C18.



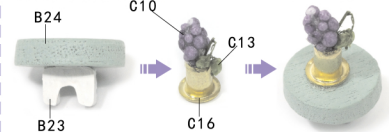
Pot plant

Glue C13 into C29.



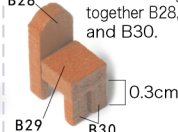
Round table

Glue each of the parts together.



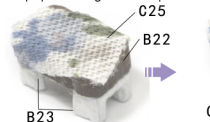
Chair

Cut two pieces of B30 and glue together B28, B29 and B30.

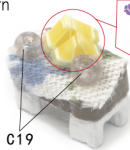


Table

Glue B22 and B23 together. Cut out C25 with the pattern paper and glue on top.



Glue C19 and C24 onto the table.

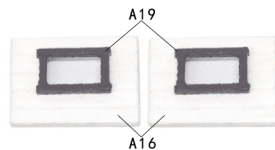


Cut a 0.1cm-thick piece of C24 into four pieces.

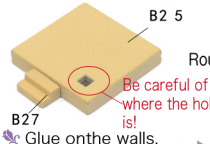


Walls

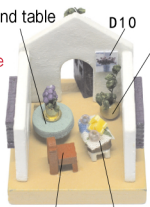
Glue each of the parts to A15 and A16.



Glue B22 and B27 together.



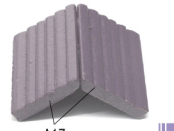
Glue on each of the parts.



Pass C3 through the hole in the floor and glue it to the top of the wall.



Glue A17 together to make the roof.



Glue on the roof.



Glue on the walls.



Round table

Pot plant

Chair

Light

That completes the house.

Lamp

✂ Cut to separate the left and right cords of C3.

✂ Wrap a piece of C5 around one of the cords.

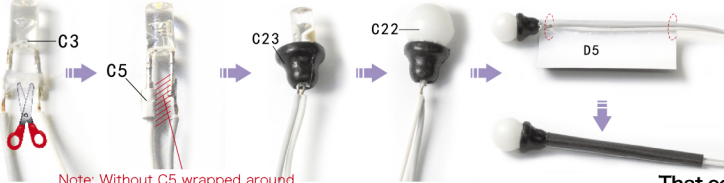
✂ Pass C3 through C23.

✂ Insert and glue C3 into C22.

✂ Wrap and glue D5 around C3 up to the joint.

✂ Cut pieces of C31, bend them and glue on.

C31 : 1.5cm



Note: Without C5 wrapped around one cord it may short circuit.

That completes the lamp.



Garden objects

Wheelbarrow

✂ Glue B32 and B33 together.

✂ Glue on B31.

✂ Cut the B34 pieces.

✂ Glue on B34 and C10.



That completes the wheelbarrow.

Flower box

✂ Glue B10 together like in the image.

✂ Glue in C10 and C13.

Shovel

✂ Cut a piece of C31 and glue to D13.

✂ Bend D14 and glue on.



That completes the flower box.

That completes the shovel.

Picnic blanket

✂ Cut out each part and glue on. C27 : 1.8cm X 1.8cm

Bicycle

✂ Glue B35, B36 and B37 together.

✂ Glue on C10 and C13.



That completes the picnic blanket.

That completes the bicycle.

Bench

✂ Cut C31 into 9 pieces.

✂ Glue together groups of 4 pieces and 5 pieces of C31.

✂ Glue C31 and B38 together.

✂ Glue the magazine to the bench.

Magazine

✂ Fold D4 in a zig-zag shape and glue together.



That completes the bench.

Tree

✂ Cut the trunk of C9 so that it's flat.

✂ Glue C9 to D20.

✂ Glue C8 to D20.



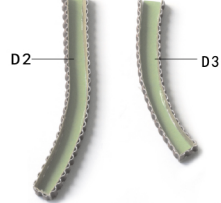
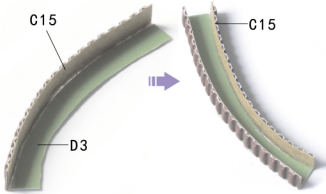
That completes the tree.

Flower beds

✂ Cut out C15 with the pattern paper.

✂ Glue the cut-out C15 around D3.

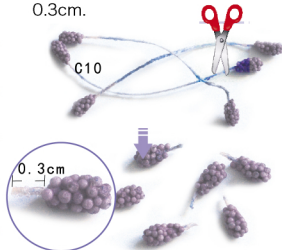
✂ Similarly glue the C15 cut-out with the pattern paper around D2.



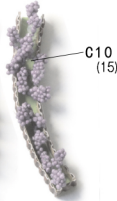
✂ Cut off the flowers of C10 but leave 0.3cm.

✂ Glue 15 C10 in the short flower bed. Glue 17 C10 in the short flower bed.

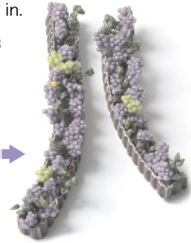
✂ Cut C13 and C12 into fine pieces and glue them in.



C10
(17)



C10
(15)



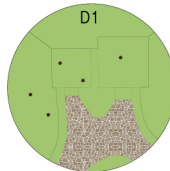
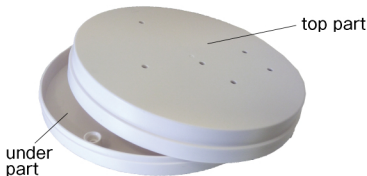
That completes the short and long flower beds.

Preparing the pedestal

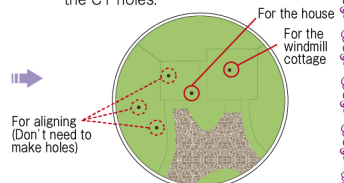
✂ Use the top part of C1.

✂ Cut out D1.

✂ Glue D1 to the top part of C1 while being careful of the position of the C1 holes.



For aligning
(Don't need to make holes)



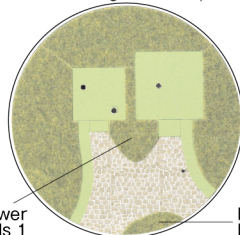
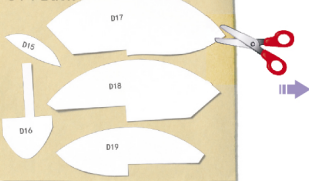
For the house
For the windmill
cottage

Using the pattern paper, align the shapes on the backside of C14.

Cut out C14.

Glue on C14 so that it aligns with the position of D1.

C14 Back



Flower beds 1

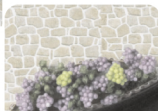
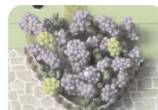
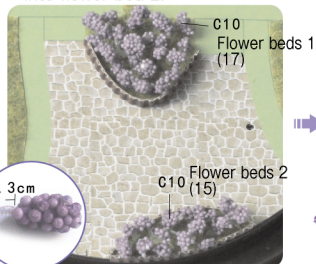
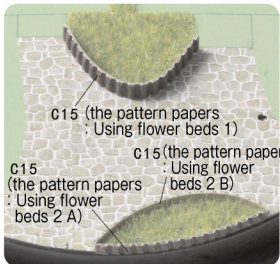
Flower beds 2

Setting the pedestal

Cut out C15 with the pattern paper. Glue C15 around flower beds 1 and 2.

Cut off the flowers of C10 but leave 0.3cm. Glue 17 flowers into flower bed 1, and 15 into flower bed 2.

Cut C13 and C12 to appropriate sizes.



Pass the cords through the pedestal's holes and glue on the windmill cottage and house.

Pass the lamp's cord through the pedestal's hole and glue on the lamp.



Note: Insert the part marked with the red slanted lines.



Glue the long flower bed, short flower bed, bicycle and bench into the garden.

Short flower bed



Long flower bed Bicycle

Bench

Glue the wheelbarrow, flower box, C10, C12 and C8 into the back garden.

C10



C12

C8

C8

C12

C10

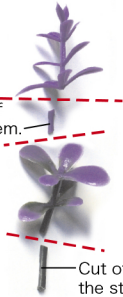
Flower box

Wheelbarrow

Cut a C11 into two and cut off the stems.

Glue the tree, C11, the shovel, C10, C12, C8 and picnic blanket to the left side of the garden.

Cut off the stem.



Cut off the stem.

Shovel



C8

C10

C11

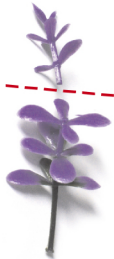
C12

Tree

C8

Picnic blanket

Cut a C11 into two.



Glue C11, C10, C12 and C8 to the right side of the garden.



C8

C11

C10

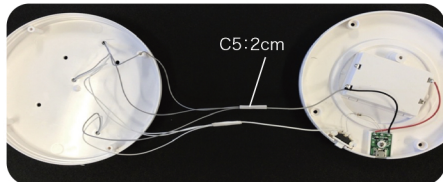
C8

C12

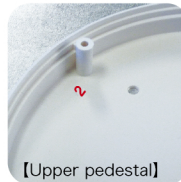
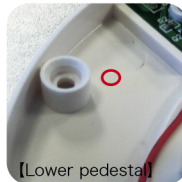


Cord Wiring

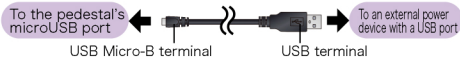
- Gather together the C3 cords by color, and connect them to the C1 cords of the same color.
Cut off 2cm pieces of C5 to wrap around the connected areas.



- Bring together the two pedestal parts so the screw hole of the lower pedestal with a circle sign matches the No. 2 screw hole of the upper pedestal. Fasten the screws in four places of the pedestal.



- Power switch please turn on/off with the power switch.
- microUSB port (USB Micro-B)
Connect main unit and external power device with a USB port with microUSB cable.
Input voltage /Current :DC5V/1~2.4A



Completed

- Cover C2 and decorate.



- Turn on the light and decorate.



Completed image

※This photo shows just one example of an arrangement feel free to customize as you wish. Please cover C2 and decorate.



Garden



Windmill cottage interior



House interior



D(paper)parts

